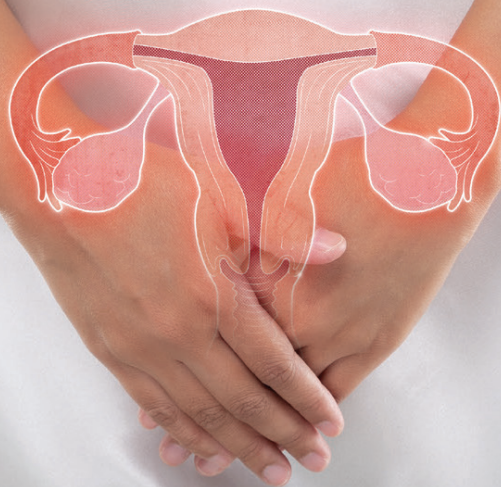




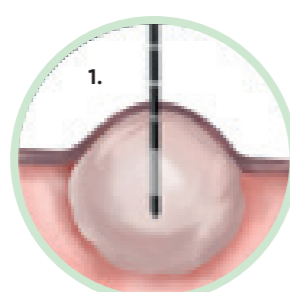
**Uterine Microwave Ablation  
for Fibroids and Adenomyosis**



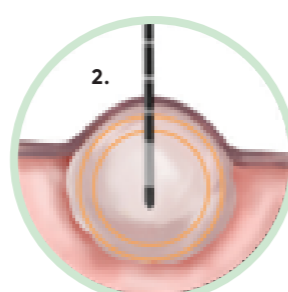


## MaxBlate® Pro Microwave Ablation Therapy in Gynaecology

### Transabdominal Ultrasound-Guided Percutaneous Approach

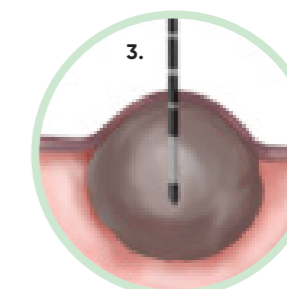


Under real-time ultrasound guidance, a Microwave Ablation Antenna will be inserted into the targeted area (fibroid / adenomyosis).



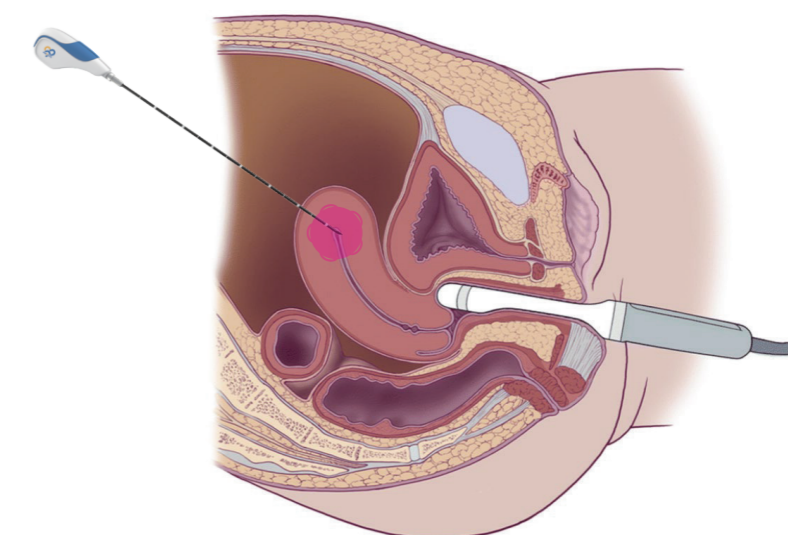
Microwave generates heat to ablate and coagulate fibroid tissue from inside, inducing symmetric tissue necrosis and subsequently shrink it. A 5cm fibroid can be treated in about 15 minutes.

### TVS-Guided TransVaginal/TransCervical Approach



The treated fibroid will shrink and be absorbed by the body over time, leaving no open wound, no stitch and no scar, with maximum preservation of uterus structure and function.

### TVS-Guided Laparoscopic Assisted

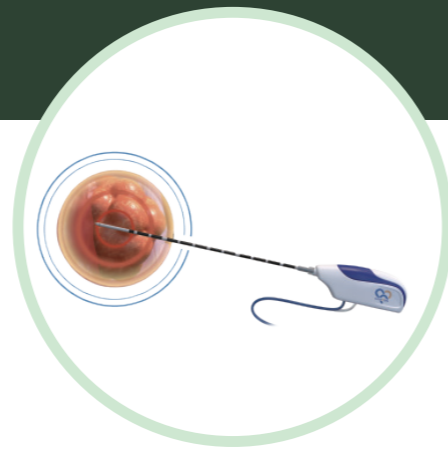


#### Features:

- Direct vision and pre-ablation exploration
- Intra-operative monitoring
- Post-ablation examination



# MaxBlate® Pro Microwave Ablation System



Interactive and sensitive touch screen



Cooling and real-time temperature monitoring

Integrated peristaltic pump for continuous antenna cooling

Adjustable power and time settings

## Features:

- Powered by proprietary MaxCore™ inside with ACLC technology and PID algorithm to provide precise and stable MW output.
- IEC 60601-1 compliant for enhanced electrical safety.
- Portable and compact design for convenient transportation, installation, operation and service maintenance.
- Interactive and sensitive touch screen with adjustable power & time setting.
- Cooling and real-time temperature monitoring as well as other incorporated multi-safety monitoring control.
- Continuous and pulsed modes are available for different clinical options.

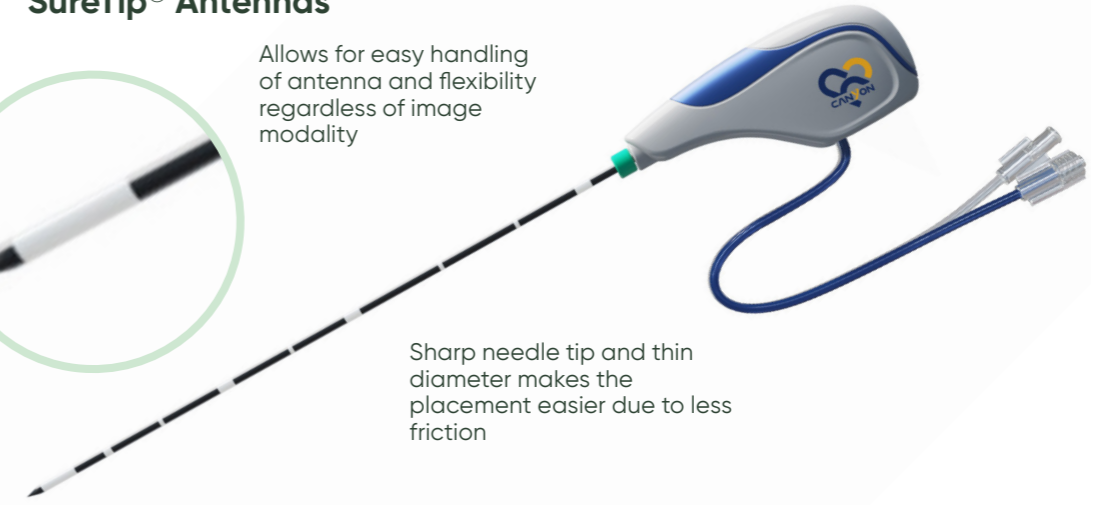


## SureTip® Antennas

Allows for easy handling of antenna and flexibility regardless of image modality



Sharp needle tip and thin diameter makes the placement easier due to less friction

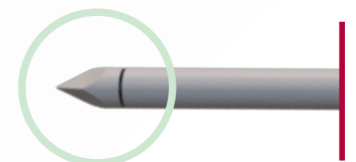


## XphereTip® Antennas

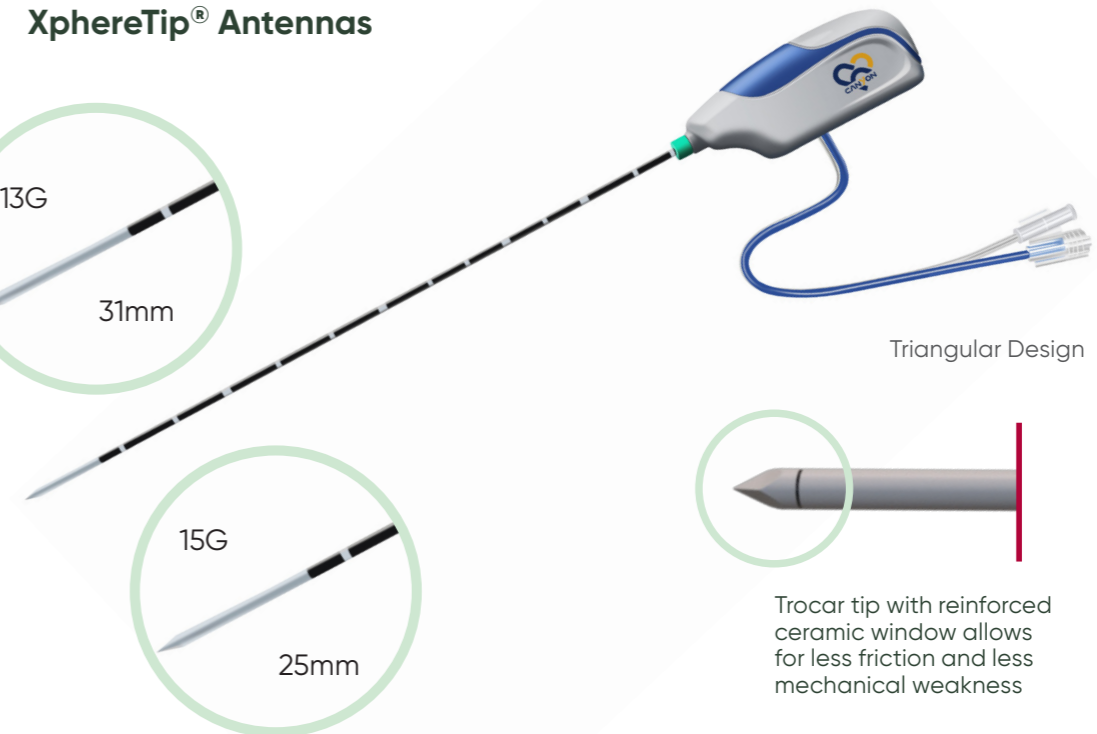
13G  
31mm

15G  
25mm

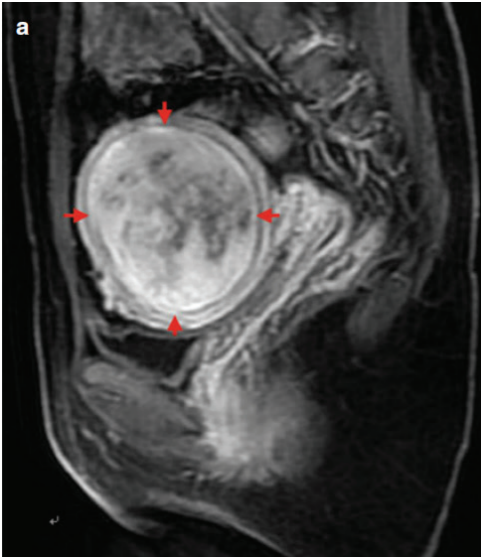
Triangular Design



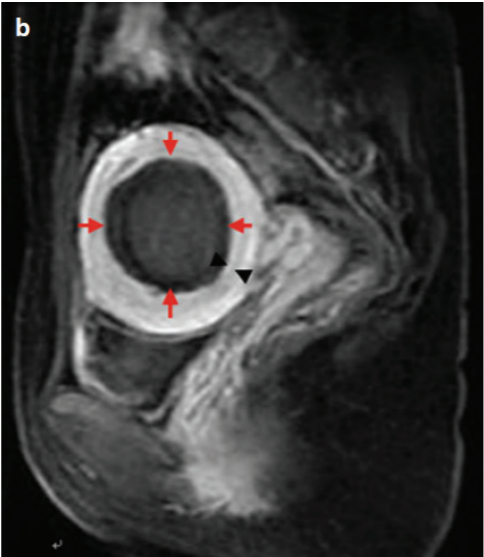
Trocar tip with reinforced ceramic window allows for less friction and less mechanical weakness



Percutaneous MWA Intramural Fibroid

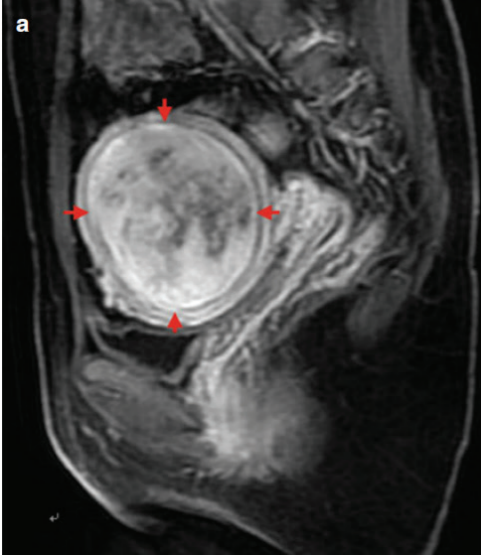


Percutaneous MWA in a 39-year-old woman with an intramural fibroid who suffered from menorrhagia and refused surgical treatment. MWA was implemented to relieve her symptom. (a) Preablation sagittal T1 WI contrast-enhanced magnetic resonance maging (ce-MRI) scan showed one enhancement intramural fibroid (arrows) with the size of 7.9x6.9 cm.

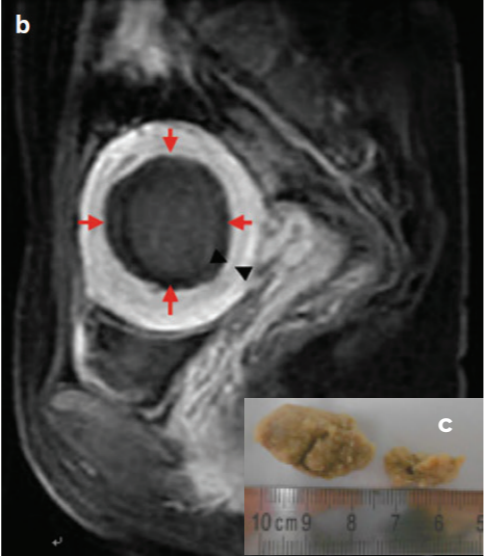


(b) Scan obtained 3 days after ablation shows the ablated fibroid (red arrows) without enhancement shrink to 4.9 x 4.5 cm, which is surrounded by the unablated belt (black arrows) with 0.5 cm in width<sup>1</sup>

Percutaneous MWA Intramural Fibroid



Percutaneous MWA in a 37-year-old woman with a submucosal fibroid who suffered from menorrhagia and refused hysteroscopic myomectomy. MWA was implemented to relieve her symptom. (a) Preablation sagittal T1 WI ce-MRI scan showed one enhancement submucosal fibroid (arrows) with the size of 3.9 X 3.3 Cm.



(b) Scan obtained 3 days after ablation shows the ablated fibroid (arrows) without enhancement shrinks to 3.5x3.3 cm. (c) Two pieces of tissue discharged from vagina with the menstrual blood 1 month after the ablation, then the symptom of menorrhagia was relieved<sup>2</sup>

Ordering and Specifications

MaxBlate® Pro	
Ref	KY-2100A
Frequency	2450 MHz
Display	7-inch touchscreen
Energy Output	5-150W
Time Setting	1-30 Minutes
Working Power	100V-240V 50-60 Hz
Weight	12 kg
Size	46 x 40 x 18 cm
Foot pedal included	



SureTip® Antennas

Ref	Diameter	Active Tip	Total Length
KY-2450B-T7	15G	11 MM	200 MM
KY-2450B-T10	15G	11 MM	250 MM
KY-2450B-T14	15G	11 MM	300 MM
KY-2450B-T3	16G	11 MM	200 MM
KY-2BBC-24D	16G	11 MM	300 MM
KY-2450B-T13	18G	11 MM	200 MM

XphereTip® Antennas

Ref	Diameter	Active Tip	Total Length
KY-2450B-QT31	13G	31mm	200mm
KY-2450B-QT32	13G	31mm	250mm
KY-2450B-QT33	13G	31mm	300mm
KY-2450B-QT6	15G	25mm	200mm
KY-2450B-QT7	15G	25mm	250mm
KY-2450B-QT8	15G	25mm	300mm

All antennas come with a compatible coaxial cable

Reference:  
1, 2. Liang P, et al. (2015) Microwave Ablation of Solid Tumors.  
Springer Science+Business Media Dortrecht. DOI 10.1007/978-94-017-9315-5\_24.



**NORDICS**  
customer@mermaidmedical.com  
Phone: +45 47 10 85 70

**NETHERLANDS**  
info@mermaidmedical.nl  
Phone: +31 850 60 8160

**SPAIN**  
customer@mermaidmedical.es  
Phone: +34 925 717 378

**UNITED KINGDOM**  
customer@mermaidmedical.co.uk  
Phone: +44 1704 560493



# MaxBlate® Microwave Ablation Generators

XXXXXXXXXXXXXXXXXXXX

XXXXXXXXXXXXXXXXXXXX

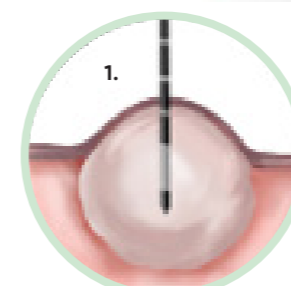
XXXXXXXXXXXXXXXXXXXX



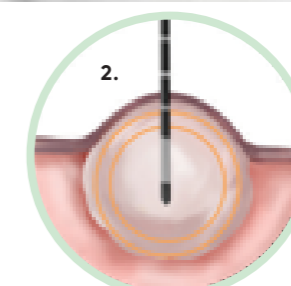
## Features:

- Powered by proprietary MaxCore™ inside with ACLC technology and PID algorithm to provide precise and stable MW output.
- IEC 60601-1 compliant for enhanced electrical safety.
- Portable and compact design for convenient transportation, installation, operation and service maintenance.
- Interactive and sensitive touch screen with adjustable power & time setting.
- Cooling and real-time temperature monitoring as well as other incorporated multi-safety monitoring control.
- Continuous and pulsed modes are available for different clinical options.

## Transabdominal Ultrasound-Guided Percutaneous Approach

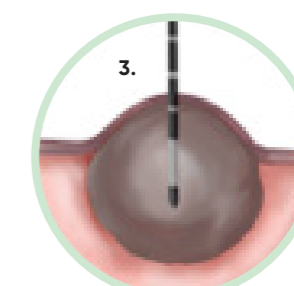


Under real-time ultrasound guidance, a Microwave Ablation Antenna will be inserted into the targeted area (fibroid / adenomyosis).



Microwave generates heat to ablate and coagulate fibroid tissue from inside, inducing symmetric tissue necrosis and subsequently shrink it. A 5cm fibroid can be treated in about 15 minutes.

## TVS-Guided TransVaginal/TransCervical Approach



The treated fibroid will shrink and be absorbed by the body over time, leaving no open wound, no stitch and no scar, with maximum preservation of uterus structure and function.