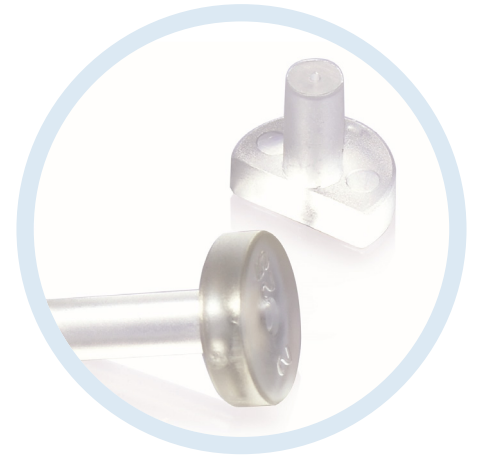




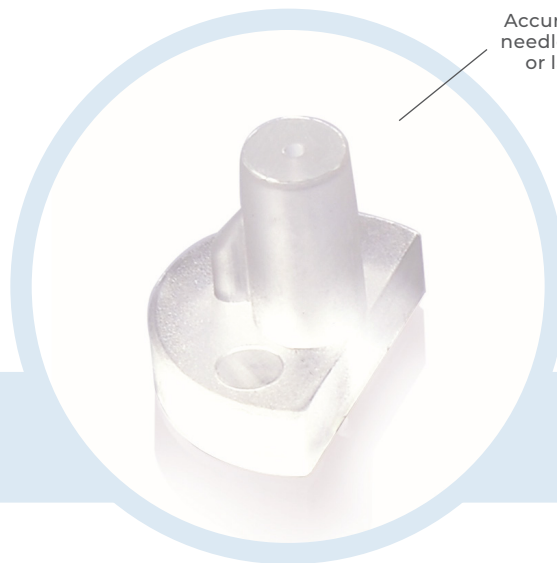
## Stereotix-2 Needle Guides



Needle guides without slot for wire positioning. Designed for accurate placement of the needle during stereotaxi. All needle guides are compatible with the acquired software from GE Healthcare.

### Features:

- Provides horizontal or lateral approach for core biopsy and localization
- Compatible with Senovision, Stereotix DS, Senographe 200D and DMR systems
- Packaged 2 guides per package, 5 packages per case; sold per case
- Sterile item



Accurate placement of needles with horizontal or lateral approach

## Ordering Information

### Stereotix-2 Needle Guides/Bushings

Ref no.	Description	Hole Diameter mm	Gauge	Qty/box
E63101DL	Stereotix-2 Needle Guide	0.9	21	10
E63101DM	Stereotix-2 Needle Guide	1	20	10
E63101DN	Stereotix-2 Needle Guide	1.2	19	10
E63101DP	Stereotix-2 Needle Guide	1.4	18	10
E63101DR	Stereotix-2 Needle Guide	1.8	16	10
E63101DS	Stereotix-2 Needle Guide	2.25	14	10
E63101EB	Stereotix-2 Needle Guide	1	20	10
E63101EC	Stereotix-2 Needle Guide	1.2	19	10
E63101EA	Stereotix-2 Needle Guide	0.9	21	10
E63101DE	Stereotix-2 Needle Guide	0.9	21	10
E63101DJ	Stereotix-2 Needle Guide	1.8	16	10
E63101DK	Stereotix-2 Needle Guide	2.25	14	10
E63101DG	Stereotix-2 Needle Guide	1.1		10
E63101DH	Stereotix-2 Needle Guide	1.3		10
E63101DF	Stereotix-2 Needle Guide	1	20	10

#### Contact Details, Nordics

customer@mermaidmedical.com  
mermaidmedical.com

#### Contact Details, NL

info@mermaidmedical.nl  
mermaidmedical.com

#### Contact Details, UK

customer@mermaidmedical.co.uk ·  
mermaidmedical.com