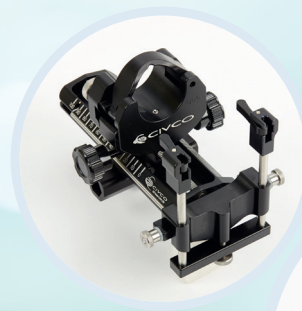




Men's Health Catalogue



MEN’S HEALTH

Mermaid Medical offers a wide range of products suited for a variety of procedures for Men’s Health.

AccuCARE™

The AccuCARE™ equipment line features an array of transperineal solutions aimed at prostate cancer detection, targeting and treatment, including steppers, stabilizers, and storage stands. The AccuCARE™ accessory kits complement the equipment with cost-effective solutions needed to perform ultrasound-guided transperineal procedures.

Besides being crucial for rectal spacing procedures, the AccuCARE™ line can be used for brachytherapy, cryotherapy, fiducial marker placement, saturation biopsies and targeted biopsies.

Furthermore, our portfolio also consists of endocavity needle guides ideal for transrectal biopsies, fluid aspirations, catheterization, and marker placement ensuring confident outcomes. These products are to be found in our Ultrasound Needle Guidance and Probe Covers catalogue.

TP PIVOT PRO™

This new, ultrasound-guided, transperineal system enables freehand, minimally invasive approach for the procedure.

TP Pivot Pro™ is a smarter approach to prostate biopsies. The minimally invasive transperineal prostate biopsy offers an more targeted approach than typical transperineal biopsies, such as grid-based biopsies, minimizing perineal puncture sites compared to grid-based solutions while also decreasing negative outcomes such as infection and patient pain.

It provides doctors with greater control and confidence, patients with improved satisfaction and comfort¹, and clinics with better outcomes and workflow. Therefore, it is the smarter approach for prostate biopsies for doctors, patients and clinics.

Mermaid Medical provides physicians and hospitals with safe and functional equipment and accessories indicated for several transperineal and transrectal procedures, making it a one-stop-shop experience.

Mermaid Medical Group is a Nordic, privately owned company established in 2007 and headquartered in Copenhagen, Denmark. We develop, manufacture, and distribute medical devices to hospitals and end users across Europe, the U.S., and Asia. We primarily work within solutions to diseases in the vascular system as well as other devices used in interventional radiology. We strive to be the preferred partner for manufacturers as well as hospitals and healthcare professionals.

TABLE OF CONTENT

Steppers

EX3™ Stepper

Classic Stepper

4

5

Micro-Touch™ Stabilizers

Micro-Touch™

Micro-Touch™ LP

Micro-Touch™ Transportation Stand

6

6

6

AccuCARE™ Accessories

Accessory Kits

Template Grid

Endocavity Balloon

Endocavity Drape

7

7

7

7

Multi-Purpose Workstations™

Multi-Purpose Workstation™ Stepper

Multi-Purpose Workstation™ Stabilizers

8

9

Automatic Biopsy Needles

M-Biopsy® Automatic Disposable Biopsy Needle

10

Transperineal Prostate Biopsy system

TP PIVOT PRO™

12

Endocavity Needle Guides

Endocavity Needle Guides

16

Endocavity Ultrasound Probe Covers

CIV-Flex™ Latex-Free Endocavity Covers

NeoGuard® Latex-Free Endocavity Covers

17

17

Steppers



EX3™ Stepper

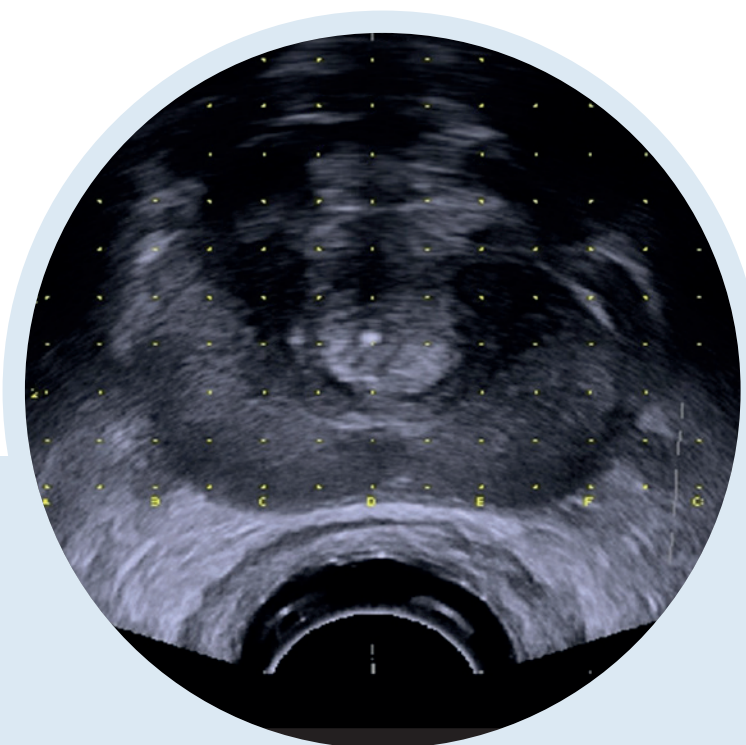
Advancing the Standard in Real-Time Planning

For ultrasound-guided brachytherapy and other transperineal procedures, choose CIVCO's EX3™ Stepper for direct connection and clear reporting of angular and linear position directly to the treatment planning software.

The EX3™ is compatible with leading treatment planning software including Varian Medical System's VariSeed™ and Vitesse™ Acoustic Medsystem's Radvision and MIMSoftware's Symphony™ and bk3000/bk5000 ultrasound systems.

Features:

- Removable electronic unit to mitigate cross-contamination risk and reduce cleaning time.
- Reports ultrasound probe positioning to treatment planning software offering timely data analysis.
- Offers smooth rotation and free movement for prostate cancer detection and treatment.



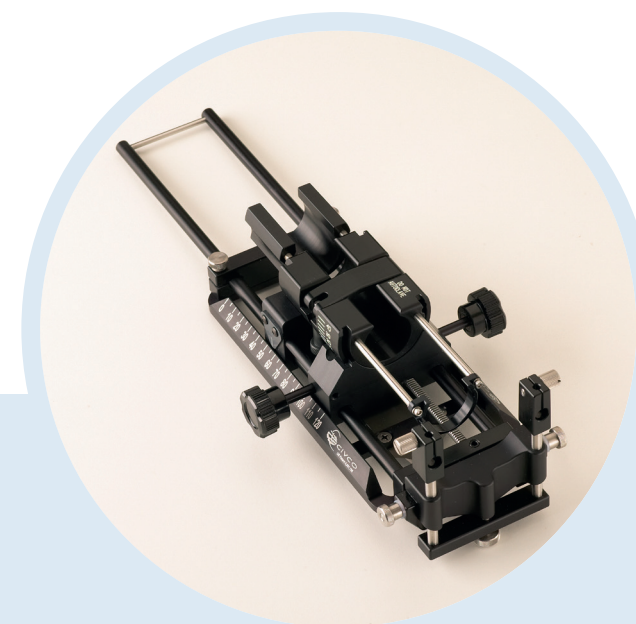
Classic Stepper

The Classic Stepper is a lightweight precision stepping device adaptable to a variety of Brachytherapy / Cryotherapy endocavity biplane transducers.

The Classic Stepper features a secure centerline detent with 60-degree angular rotation both counter and clockwise. Also, easy-to-read marking scales are aligned to illustrate base to apex movements of the probe.

Features:

- Accurate transducer control and placement verification using linear advancement feature
- Transducer rotates easily out of stepper for easy CIVCO endocavity balloon installation and device cleaning
- Grid independently moves to allow a "flush" placement against the perineum improving needle placement within the gland





Micro-Touch™ Stabilizers

Micro-Touch™

The Micro-Touch™ features stable single-arm fixation with a single-point locking mechanism to instantly fix the stabilizer in the desired position. An adjustable weight-assist feature allows users to achieve a “zero-gravity” feel when positioning the ultrasound probe both in vivo and in vitro.



Micro-Touch™ LP

The Micro-Touch™ LP is specifically designed for use on cystoscopy tables with a fixed fluoroscopy gantry or fixed table. The Micro-Touch™ LP attaches to tables opposite the gantry and allows users to perform simultaneous or intermittent fluoroscopy and seed implantation while retaining the remarkable versatility of the Micro-Touch™ ultrasound platform and needle guidance system.



Micro-Touch™ Transportation Stand

The Micro-Touch™ transportation stand provides a secure and stable method to transport the Micro-Touch™ stabilizer and corresponding stepper, and to store it when not in use.



AccuCARE™ Accessories



AccuCARE™ accessory kits are a cost-effective solution, providing all accessories needed to perform ultrasound-guided brachytherapy or other transperineal procedures. Each kit contains 10 complete procedures comprised of a template grid, system drape, endocavity balloon and a gel packet

Template Grid

Sterile, single-use template grids consist of rows and columns of holes spaced 5mm apart, providing accurate placement of radioactive seeds in predefined areas of the prostate. The single-use grid is sterile and is a cost-effective solution for an infection-controlled environment.

Endocavity Balloon

Single-use, low-profile design of the endocavity balloon features an adjustable inflation control mechanism to control the offset between transducer and prostate for enhanced ultrasound imaging

Endocavity Drape

Single-use drape provides a protective barrier for AccuCARE™ equipment during transperineal procedures. The clear material allows for easy identification and manipulation of AccuCARE™ instruments.



Multi-Purpose Workstations™

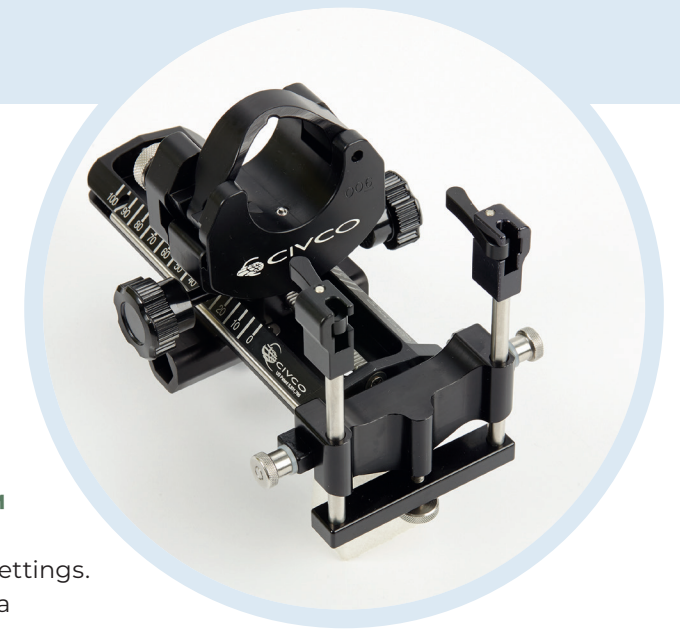
Multi-Purpose Workstation™

The Multi-Purpose Workstation™ and Stepper is ideally suited for transperineal and transrectal procedures where a stable platform is required. Available in floorstand or table mount configurations, the workstation features a single-point locking mechanism for rapid transition and a multi-directional base.

Designed for Cryotherapy, Fiducial Marker Placement, Saturation Biopsy, Targeted Biopsy and Volume Studies.

Features:

- **FREEHAND MANIPULATION** - Allows practitioners to manipulate the transducer and lock instantly in any desirable position
- **INDEPENDENT MICRO-ADJUSTMENT** - Adjustments can be made in every plane and axis to attain an ideal orientation and starting position
- **VERSATILITY & FLEXIBILITY** - Will adapt to any transperineal procedure requiring ultrasound guidance



Multi-Purpose Workstation LP™

Designed for inpatient, outpatient and clinical settings. Ideal for the user who demands the features of a Multi-Purpose Workstation, but requires a rail mount.

Multi-Purpose Workstation Stepper™

Lightweight, advanced stepping device adaptable to a variety of transrectal transducers. The quick-release feature allows the disposable grid to easily attach to stepper during template guided procedures.

Features:

- Secure centerline detent with 40-degree clockwise and counterclockwise rotation
- Accurate linear advancement of the probe in 5mm increments
- Grid independently moves from a back-side location to allow easy placement against the superficial fascia



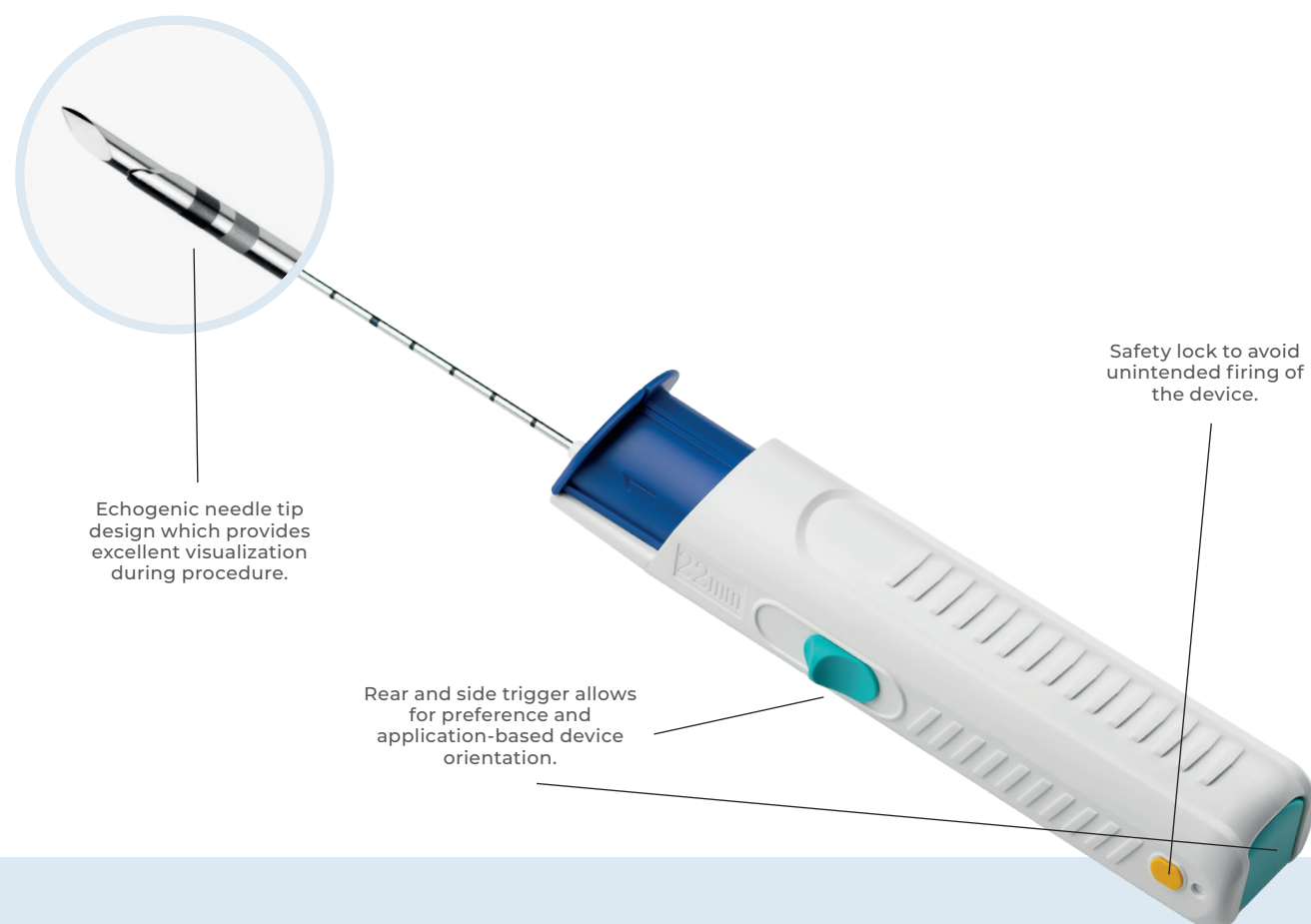
Automatic Biopsy Needles

M-Biopsy® Automatic Biopsy Needles

The M-Biopsy® fully automatic disposable biopsy instrument is a user-friendly biopsy device designed to provide a high-quality biopsy sample.

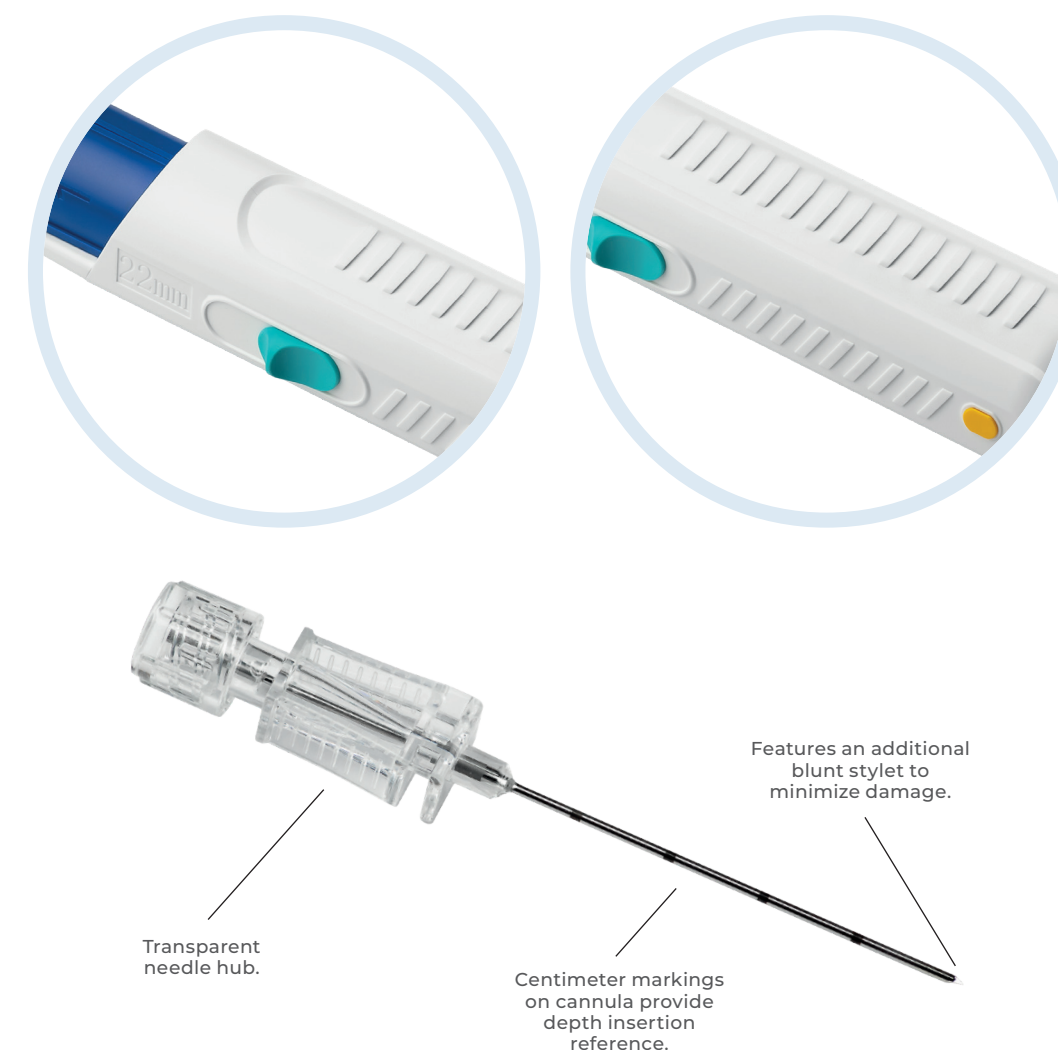
It has been designed with focus on ergonomics to secure a comfortable grip, independent of device orientation. The left and right loading sliders secures a high-quality sample without compromising device fire power.

The M-Biopsy® coaxial needle comes with a sharp trocar tip and a transparent needle hub. The needle features an additional blunt stylet to minimize damage to tissue, vasculature, and organs.



Features:

- Ergonomic and lightweight one-handed design to secure comfortable grip, increase control, and minimize needle movement during imaging.
- 2-stage left and right loading button provides reduction of force needed to cock device.
- Comes with 22mm throw length to meet a variety of clinical needs.
- Available as a single device or as a set with a coaxial needle for improved procurement and inventory control.





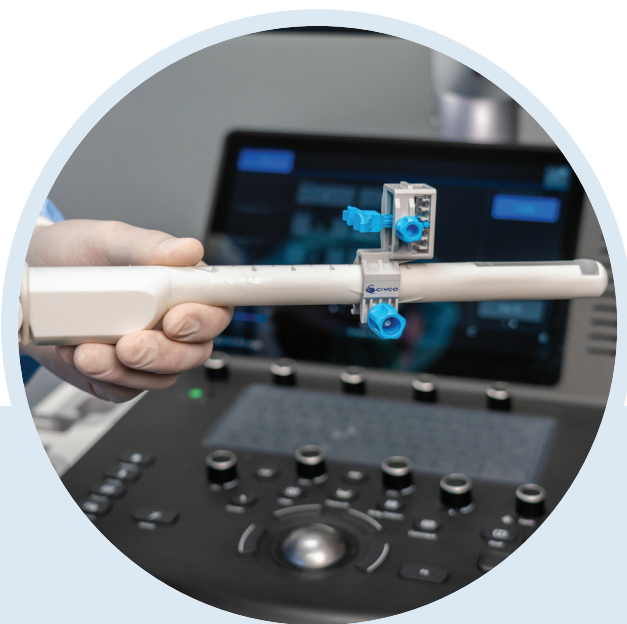
The Smarter Approach to Prostate Biopsies

This new, ultrasound-guided, transperineal system enables freehand, minimally invasive approach for the procedure.

TP Pivot Pro™ is a smarter approach to prostate biopsies. The minimally invasive transperineal prostate biopsy offers an more targeted approach than typical transperineal biopsies, such as grid-based biopsies, minimizing perineal puncture sites compared to grid-based solutions while also decreasing negative outcomes such as infection and patient pain.

It provides doctors with greater control and confidence, patients with improved satisfaction and comfort¹, and clinics with better outcomes and workflow. Therefore, it is the smarter approach for prostate biopsies for doctors, patients and clinics.

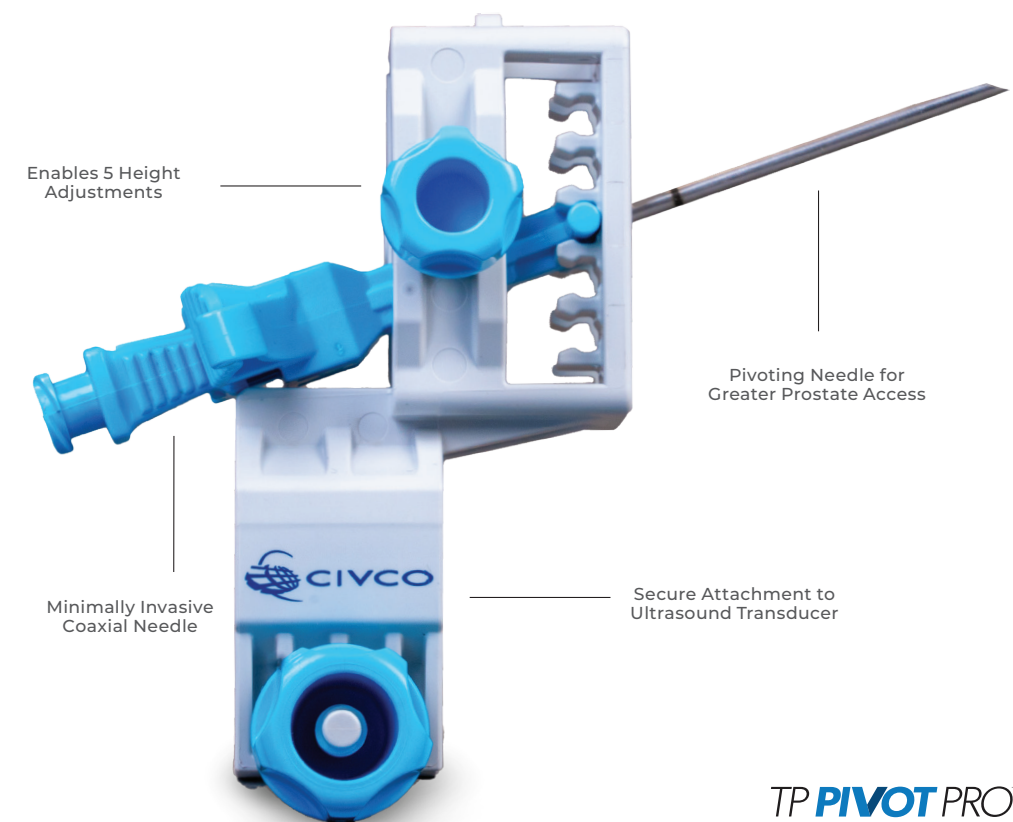
The transperineal approach is shown to reduce risk of patient infection, improve access to all zones of the prostate, and potentially eliminate the need for antibiotics altogether.²



Features:

TP Pivot Pro™ was designed with clinicians, for clinicians, to enable a smarter approach to transperineal prostate biopsies.

- Designed to fit a range of ultrasound probes.
- Secure transducer attachment, no taping required.
- Freehand, minimally invasive approach.
- Pivoting coaxial needle.
- Allows height adjustments without removing coaxial needle from guide or patient.
- Use under local or general anesthesia.
- Single-use device, no reprocessing required.



TP PIVOT PRO™

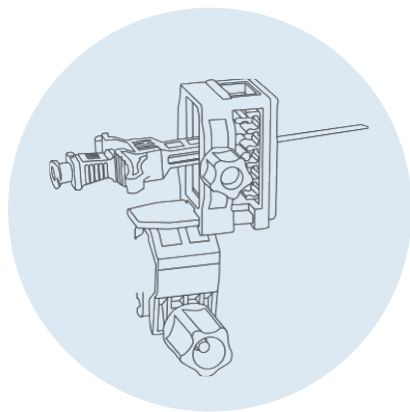
¹ Ngu I. S. Ngooi M. S. Ng H. K. Tee K. T. L. Loo C. H. & Lim M. S. (2023). Freehand transperineal prostate biopsy with a coaxial needle under local anesthesia: experience from a single institution in malaysia. Cancer Pathogenesis and Therapy 33–39. <https://doi.org/10.1016/j.cpt.2022.12.001>

² Transrectal vs. Transperineal Approach for Prostate Biopsy (Focal Healthcare) Cheng E Davuluri M Lewicki PJ Hu JC Basourakos SP. Developments in optimizing transperineal prostate biopsy. Current opinion in urology. 2022;85-90. doi:10.1097/MOU.0000000000000947

Greater workflow - Efficiencies

TP Pivot Pro™ biopsy guide improves clinician workflow for transperineal prostate biopsies:

- Easy height adjustments without removing the needle from the guide or the patient.
- Unique pivot feature allows parallel and angling options of the introducer needle while maintaining visualization within the imaging plane.
- Secure attachment to the transducer on a range of biplane probe diameters, without the need to tape the transducer.
- European professional guideline recommendations state freehand transperineal prostate biopsy technique eliminates the need for a prebiopsy rectal swab.²



Improved - Clinical Advantages of Transperineal Biopsies

Evidence shows the transperineal approach can lead to improved outcomes compared to the transrectal approach:

- Reduces risk of negative patient outcomes such as infection and rectal bleeding.³
- Significantly reduces post-biopsy complications without quinolone antibiotics, especially urosepsis.⁴
- Greater sampling of the anterior zone of the prostate.⁵
- Better detection of clinically significant disease and anterior tumours.⁶

³ Basourakos SP Alshak MN Lewicki PJ et al. Role of prophylactic antibiotics in transperineal prostate biopsy: a systematic review and meta-analysis. European urology open science. 2022;53-63. doi:10.1016/j.euros.2022.01.001

⁴ Ultrasound-guided transperineal prostate biopsy (Mayo Clinic)

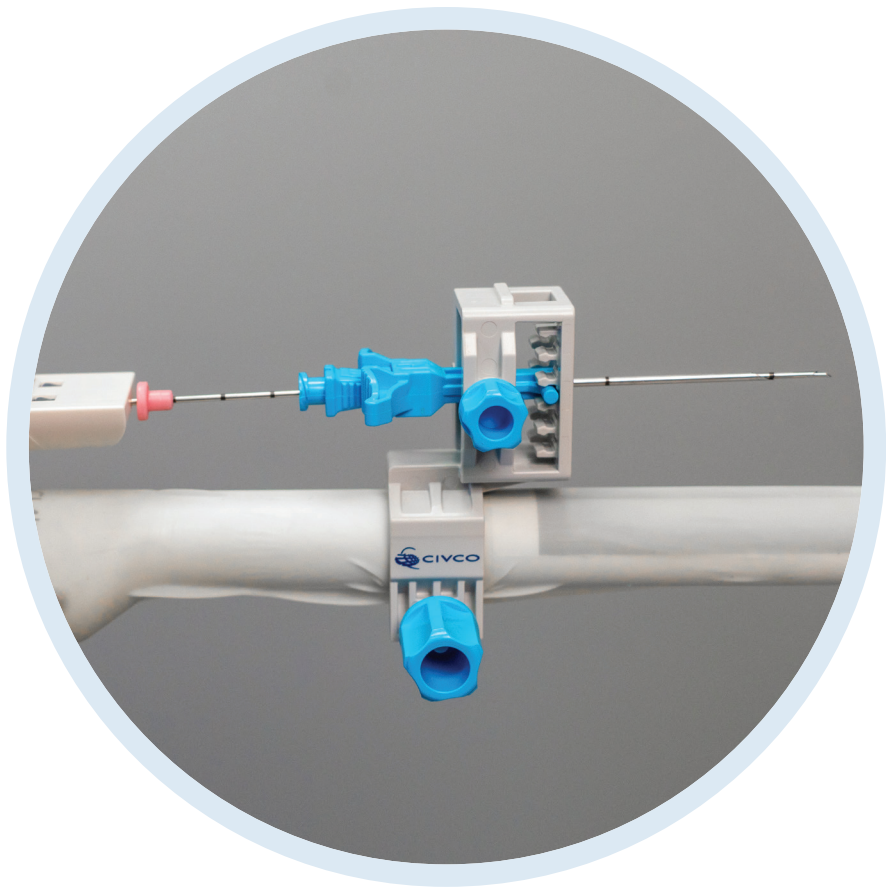
⁵ Wang L Lu B He M Wang Y Wang Z Du L. Prostate cancer incidence and mortality: global status and temporal trends in 89 countries from 2000 to 2019. Frontiers in public health. 2022. doi:10.3389/fpubh.2022.811044

⁶ Key Statistics for Prostate Cancer (American Cancer Society)

Better - Provider Economics

Evidence shows freehand transperineal prostate biopsies may be performed in an office under local anesthesia, reducing overhead costs associated with general anesthesia, operating room and equipment requirements.

- Reducing infection risks can result in potential cost savings. A comprehensive literature search estimated the cost of post-prostate biopsy sepsis.⁷
- TP Pivot Pro™ gives clinicians a smarter way to experience the benefits of freehand transperineal biopsy approach.



⁷ Thomson A Li M Grummet J Sengupta S. Transperineal prostate biopsy: a review of technique. Translational andrology and urology. 2020;3009-3017. doi:10.21037/tau.2019.12.40



Endocavity Needle Guides

Endocavity Needle Guides

CIVCO's endocavity needle guidance systems are manufactured for a variety of transducers and designed to correspond with on-screen software guidelines.

CIVCO's complete line of endocavity needle guidance solutions include transrectal and transvaginal guides for ultrasound transducers from leading ultrasound system manufacturers.

Features

- Designed to provide a secure fit to a wide range of transducers.
- Recommended for procedures such as tissue biopsies, fluid aspirations, catheterization, and marker placement.
- Reduces the risks associated with cross-contamination.
- Reduces procedure prep and clean-up time.

Smooth transition from the large funnel insertion point to the exit point ensures seamless navigation during puncture procedures.



Endocavity Ultrasound Probe Covers

CIV-Flex™ Latex-Free Endocavity Covers

The durable CIV-Flex™ material allows ultrasound waves to travel freely, offering distortion-free imaging. CIV-Flex™ easily slides over transducers and is a recommended alternative for latex-sensitive patients and professionals.

Features

- Sterile cover kits include gel packet and colored elastic bands.
- Not made with natural rubber latex.
- Especially popular for OB/GYN scanning procedures.



Soft pliable material, comfortable for patients.

NeoGuard® Latex-Free Endocavity Covers

NeoGuard® is a rolled cover made with material specially designed for ultrasound use. These high-quality covers are available for popular endocavity transducers and are recommended for patients and professionals with latex protein sensitivities.

Features

- Covers include colored elastic bands.
- Sterile gel packets available separately.
- Not made with natural rubber latex.



Ordering and Specifications

AccuCare™

EX3™ Stepper

Ref. no.	Product Description	Box
609-004	EX3™ Stepper - Best Sonalis TRT TriView	1
620-119	EX3™ Stepper - BK Medical 8848, 8558, 8658, E14CL4b	1
642-443	EX3™ Stepper - GE Healthcare ERB	1
642-514	EX3™ Stepper - GE Healthcare E7C8L	1
644-081	EX3™ Stepper - FUJIFILM Healthcare (Hitachi) C41L47RP, EUP-U533	1
614-119	EX3™ Stepper - FUJIFILM Healthcare (Hitachi) UST-672-5/7.5	1
658-007	EX3™ Stepper - Mindray ELC13-4 (U/E/s)	1
676-177	EX3™ Stepper - Siemens Endo-P11	1
683-003	EX3™ Stepper - Terason 8B4S	1

Classic Stepper

Ref. no.	Product Description	Box
620-089	Classic Stepper - BK Medical 8558, 8658, 8848, E14CL4b	1
609-001	Classic Stepper - Best Sonalis TRT TriView	1
639-055	Classic Stepper - Esaote TRT33	1
642-316	Classic Stepper - GE Healthcare ERB	1
642-512	Classic Stepper - GE Healthcare E7C8L	1
614-092	Classic Stepper - FUJIFILM Healthcare (Hitachi) UST-672-5/7.5	1
644-064	Classic Stepper - FUJIFILM Healthcare (Hitachi) C41L47RP, EUP-U533	1
676-114	Classic Stepper - Siemens Endo-P11	1

Micro-Touch™ Stabilizers

Ref. no.	Product Description	Box
610-911	Micro-Touch™ adjustable dual-sided table mount	1
610-912	Micro-Touch™ single-sided table mount (right side)	1
610-913	Micro-Touch™ single-sided table mount (left side)	1
610-911S	Micro-Touch™ transportation stand (dual-sided table mount)	1
610-912S	Micro-Touch™ LP transportation stand (right side)	1
610-913S	Micro-Touch™ LP transportation stand (left side)	1

Accessory Kits

Ref. no.	Product Description	Box
610-2469	Sterile 18GA template grid, sterile 81.3 X 91.4cm polyethylene drape, non-sterile 2 x 14cm endocavity balloon	20
610-2470	Sterile 17GA template grid, sterile 81.3 X 91.4cm polyethylene drape, non-sterile 2 x 14cm endocavity balloon	20

Template Grids

Ref. no.	Product Description	Box
610-905	Sterile 17GA Grid	5
610-906	Sterile 18GA Grid	5
610-977	Sterile 14GA Grid	5

Endocavity Balloon

Ref. no.	Product Description	Box
610-898	Non-sterile 2 x 14cm endocavity balloon	10

System Drape

Ref. no.	Product Description	Box
610-870	Sterile flat 81.3 x 91.4cm polyethylene system drape	20

Multi-Purpose Workstation™

Ref. no.	Product Description	Box
610-974	Multi-Purpose Workstation™ with adjustable floor stand	1
610-975	Multi-Purpose Workstation LP™ with rail mount	1
610-1393	Multi-Purpose Workstation Stepper™ - Mindray 6LB7	1
610-1397	Multi-Purpose Workstation Stepper™ - SonoScape BCL10-5	1
620-094	Multi-Purpose Workstation Stepper™ - BK Medical 8558, 8658	1
620-113	Multi-Purpose Workstation Stepper™ - BK Medical 8808e, 8818	1
620-117	Multi-Purpose Workstation Stepper™ - BK Medical 8848, E14CL4b	1
642-334	Multi-Purpose Workstation Stepper™- GE Healthcare ERB	1
642-510	Multi-Purpose Workstation Stepper™ - GE Healthcare E7C8L	1
644-066	Multi-Purpose Workstation Stepper™ - FUJIFILM Healthcare (Hitachi) C41L47RP, EUP-U533	1
614-098	Multi-Purpose Workstation Stepper™ - FUJIFILM Healthcare (Hitachi) UST-672-5/7.5	1
676-121	Multi-Purpose Workstation Stepper™ - Siemens Endo-P11	1
683-006	Multi-Purpose Workstation Stepper™ - Terason 8BP4, 8B4S	1

M•Biopsy® Automatic Disposable Biopsy Needle

Ref. no.	Product Description	Box
N70118200-CE	Disposable Automatic Biopsy System 18G x 20CM - Throw Length = 22mm	5
N70118250-CE	Disposable Automatic Biopsy System 18G x 25CM - Throw Length = 22mm	5

TP PRIVOT PRO™

Ref. no.	Product Description	Box
610-1553	TP Pivot Pro™ guide only	5
610-1554	TP Pivot Pro™ with 2.6 x 30cm sterile NeoGuard cover	5
610-1556	TP Pivot Pro™ with 2.0 x 30cm sterile NeoGuard cover	5

Latex-free Endocavity Ultrasound Probe Covers

CIV-Flex™ Endocavity Probe Covers

Ref. no.	Specification	Qty/box
610-006	Sterile 11.9 tapered to 3.8 x 61cm CIV-Flex™ cover, gel	24
610-007	Non-sterile 11.9 tapered to 3.8 x 61cm CIV-Flex™ cover	24
670-038	Sterile 10.2 tapered to 2.5 x 30cm CIV-Flex™ cover, gel	24

Latex-free NeoGuard® Endocavity Probe Covers

NeoGuard® Endocavity Probe Covers

Ref. no.	Specification	Qty/box
610-1038	Sterile 2.6 x 30cm NeoGuard® cover	50
610-1039	Non-sterile 2.6 x 30cm NeoGuard® cover	50
610-1126	Sterile 2 x 30cm NeoGuard® cover	24
610-1127	Non-sterile 2 x 30cm NeoGuard® cover	24
610-1348	Non-sterile 2.6 x 30cm NeoGuard® cover	100
610-1349	Non-sterile 2.6 x 30cm NeoGuard® cover	250
610-836	Non-sterile 2.6 x 30cm NeoGuard® cover	24
610-838	Non-sterile 4 x 30cm NeoGuard® cover	24
610-843	Sterile 2.6 x 30cm NeoGuard® cover	24
610-844	Sterile 4 x 30cm NeoGuard® cover	24



mermaid medical®

UNITED KINGDOM

customer@mermaidmedical.co.uk

Phone: +44 1704 560493

www.mermaidmedical.com