



Full Core Biopsy Device and Accessories





Full Core Biopsy Device

Introducing Unique Full-Core Biopsy Device

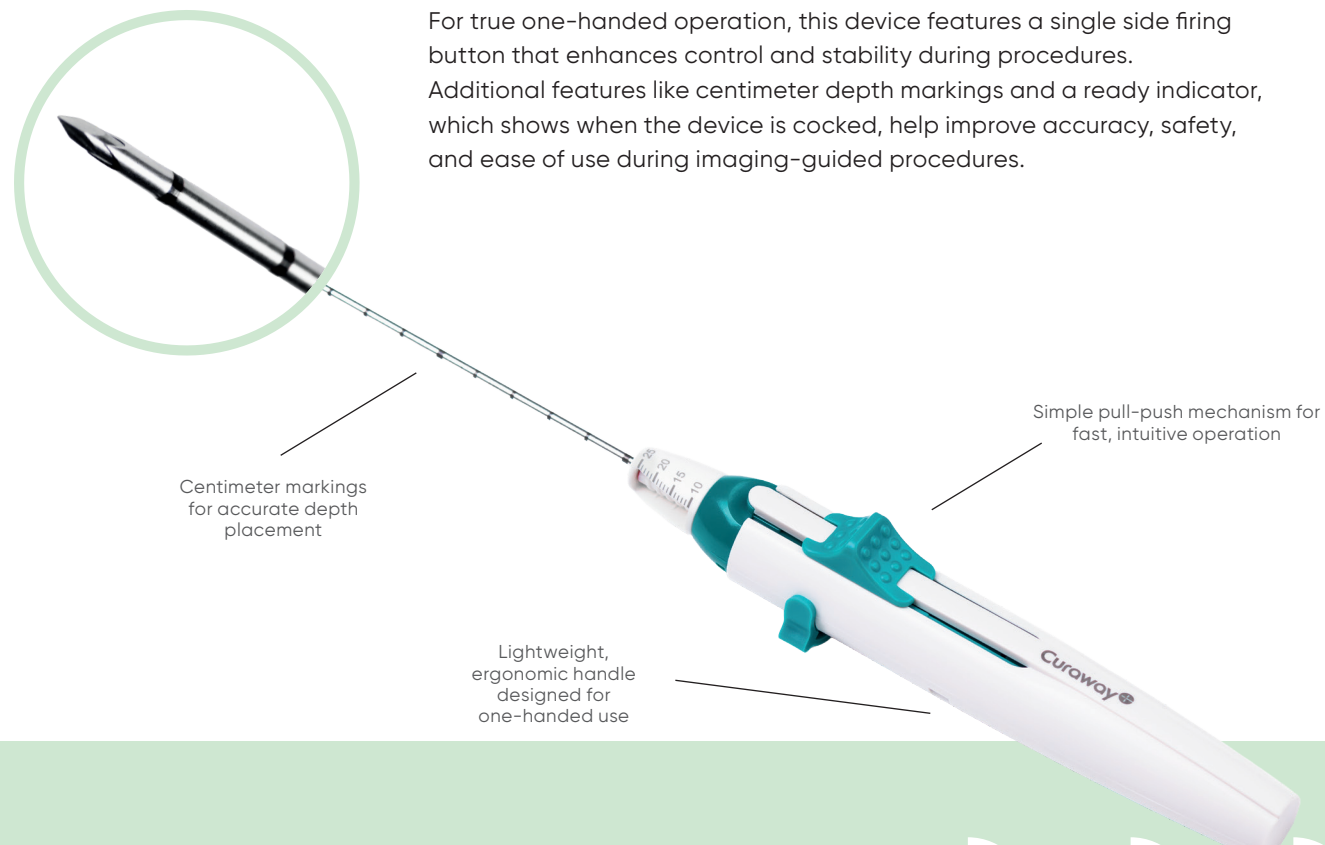
The Full Core Biopsy Device is designed to provide large, high-quality biopsy samples while remaining lightweight and ergonomic for easy, one-handed operation. Its tri-axial cutting system, combined with an internal capture mechanism built into the outer cannula's pincher-like design, securely collects and retains biopsy samples.

Because the capture system is embedded rather than external, it adds stability and protects the sample from being crushed, fragmented, or displaced, even when used with a coaxial needle. This helps keep the sample intact and ready for accurate pathological evaluation and diagnosis.

The device features minimized dead space without compromising sample size which reduces tissue trauma.

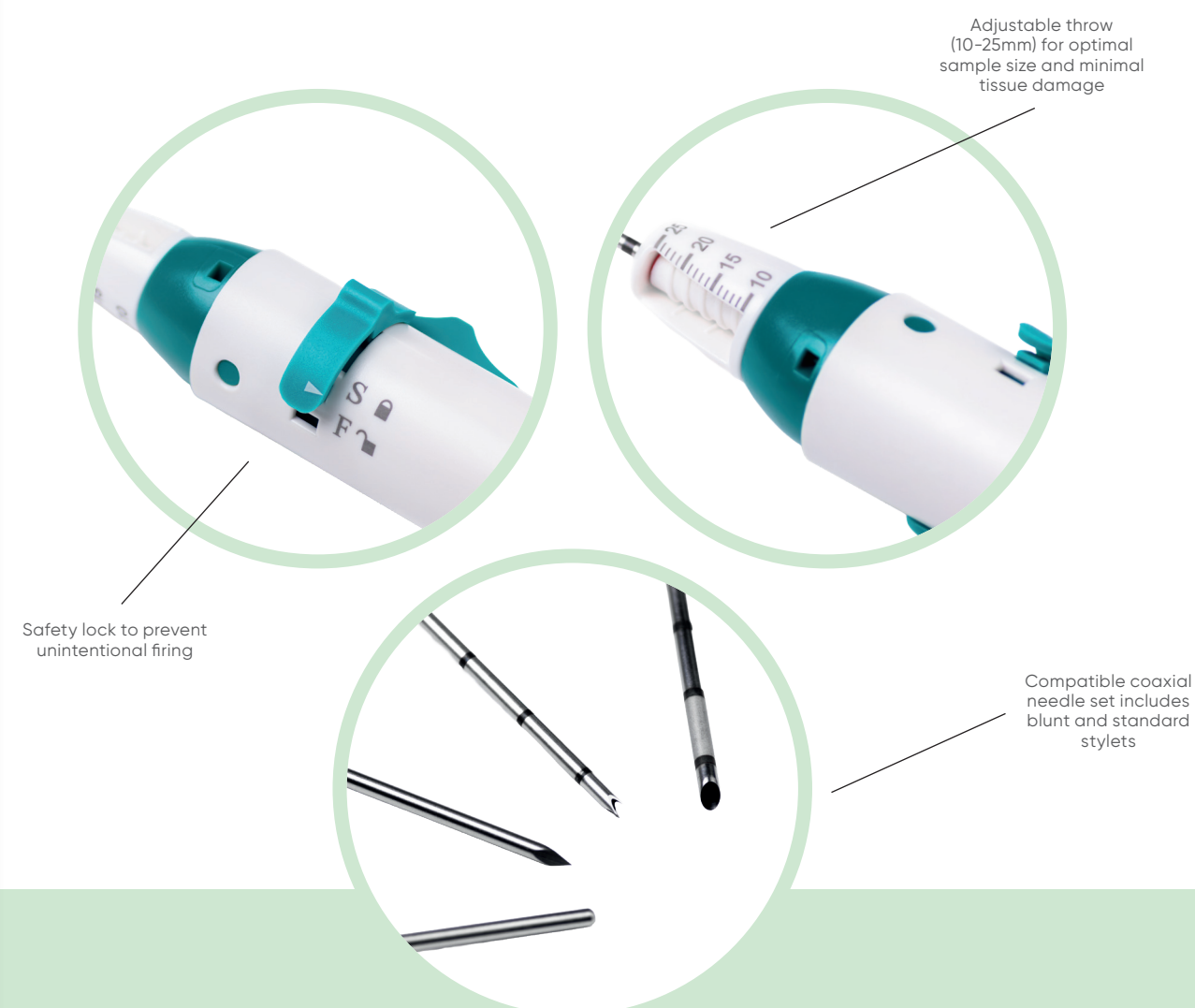
With adjustable throw lengths ranging from 10 to 25 mm, the device offers flexibility based on the target organ, sample size, and patient anatomy. The 20G version is ideal for CT-guided lung biopsies due to its lightweight handle, which remains stable and balanced while the patient is positioned inside the CT gantry. This design minimizes the risk of displacement, supporting precise targeting and accurate sampling.

For true one-handed operation, this device features a single side firing button that enhances control and stability during procedures. Additional features like centimeter depth markings and a ready indicator, which shows when the device is cocked, help improve accuracy, safety, and ease of use during imaging-guided procedures.



Features:

- Adjustable throw (10–25 mm) for optimal sample size and minimal tissue damage.
- Ready indicator confirms when device is cocked and ready to fire.
- Simple pull-push mechanism for fast, intuitive operation.
- Lightweight, ergonomic handle designed for one-handed use – one of the lightest Full Core biopsy devices on the market.
- Minimized dead space compared to similar devices.
- Centimeter markings for accurate depth placement.
- Compatible with echogenic coaxial needles. Blunt and standard stylets are provided together and sold separately upon request.
- Available in 14G, 16G, 18G, and 20G.





NORDICS

Frydensbergvej 25 - DK-3660 Stenløse
customer@mermaidmedical.com

ITALY

customer@mermaidmedical.it

NETHERLANDS

info@mermaidmedical.nl

SPAIN

customer@mermaidmedical.es

UNITED KINGDOM

customer@mermaidmedical.co.uk

Ordering Information

Full Core Biopsy Instrument

Ref no.	Gauge	Length	Qty/box
BN-OCR-13/1410	14G	10 CM	5
BN-OCR-13/1416	14G	16 CM	5
BN-OCR-13/1420	14G	20 CM	5
BN-OCR-13/1610	16G	10 CM	5
BN-OCR-13/1616	16G	16 CM	5
BN-OCR-13/1620	16G	20 CM	5
BN-OCR-13/1625	16G	25 CM	5
BN-OCR-13/1810	18G	10 CM	5
BN-OCR-13/1816	18G	16 CM	5
BN-OCR-13/1820	18G	20 CM	5
BN-OCR-13/1825	18G	25 CM	5
BN-OCR-13/2010	20G	10 CM	5
BN-OCR-13/2016	20G	16 CM	5
BN-OCR-13/2020	20G	20 CM	5
BN-OCR-13/2025	20G	25 CM	5

Coaxial Biopsy Needle

Ref no.	Gauge	Length	Qty/box
BN-MAR-5/13050	13G	5 CM	10
BN-MAR-5/13110	13G	11 CM	10
BN-MAR-5/13150	13G	15 CM	10
BN-MAR-5/15050	15G	5 CM	10
BN-MAR-5/15110	15G	11 CM	10
BN-MAR-5/15150	15G	15 CM	10
BN-MAR-5/15200	15G	20 CM	10
BN-MAR-5/17050	17G	5 CM	10
BN-MAR-5/17110	17G	11 CM	10
BN-MAR-5/17150	17G	15 CM	10
BN-MAR-5/17200	17G	20 CM	10
BN-MAR-5/19050	19G	5 CM	10
BN-MAR-5/19110	19G	11 CM	10
BN-MAR-5/19150	19G	15 CM	10
BN-MAR-5/19200	19G	20 CM	10