



HemCon Patch[®] PRO

Where Bleeding Stops[™]

HemCon Patch[®] PRO is a hemostatic dressing for the external, temporary control of severely bleeding wounds intended for emergency use.

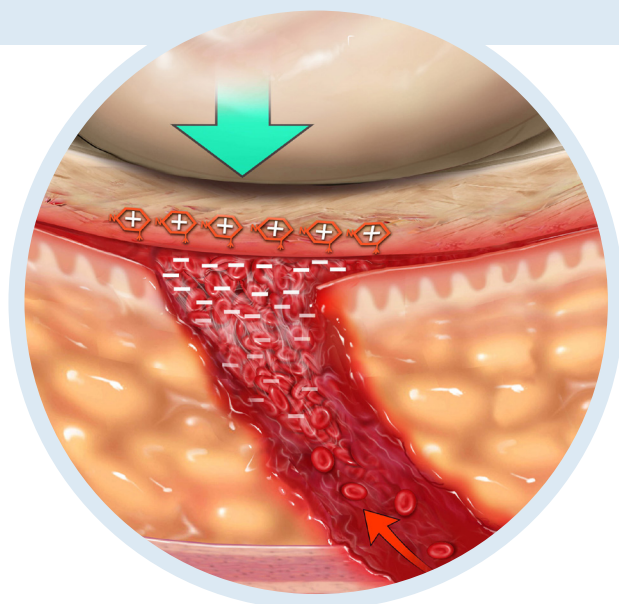
The HemCon Patch[®] PRO also controls bleeding in patients following hemodialysis and is indicated for the control of bleeding from the skin at percutaneous needle access, vascular access and percutaneous catheter access sites.

HemCon Patch[®] PRO is fabricated from chitosan, a naturally occurring, biocompatible polysaccharide.

Features:

- Non invasive
- Quick and reliable hemostasis
- Antibacterial barrier
- Flexible and contouring design
- Time saving
- Cost effective
- Contains no human clotting factors





Hemostasis is achieved after sheath removal following catheterization, interventional radiology, and electrophysiology procedures with the HemCon Patch® PRO and digital pressure.

Stops arterial bleeding

- Post catheterization procedures
- Diagnostic or interventional radiology
- Electrophysiology lab procedures
- Following hemodialysis

Ordering Information

Ref no.	Description	Qty/box
1004	HemCon Patch® PRO 4 cm x 4 cm	10

Contact Details, Nordics

customer@mermaidmedical.com
mermaidmedical.com

Contact Details, NL

info@mermaidmedical.nl
mermaidmedical.com

Contact Details, UK

customer@mermaidmedical.co.uk ·
mermaidmedical.com